

# ALIGNMENT

Alignment Tool Assortments

Camber/Caster Tools

Heavy Duty Alignment

Automotive Alignment Equipment



# Alignment Tool Assortments

## PASSENGER CAR ASSORTMENT BOARD SET

- Board set includes the most popular shims, cam kits and adjustable strut plates • A "must have" for any shop performing 4 wheel alignments on passenger cars
- Shipped with high-strength polymer display board

**CONTAINS ONE OF EACH OF THE FOLLOWING:**

26012, 26014, 82380, 82385, 82390, 86250, 86325, 86350, 86375, 87385, 87420, 87500, 87520

ASCOT NO.	MFG. NO.	DESCRIPTION
251-88260	88260	Passenger Car Assortment Board Set

A MUST  
HAVE FOR  
ANY SHOP

INCLUDE  
DISPLAY  
BOARD

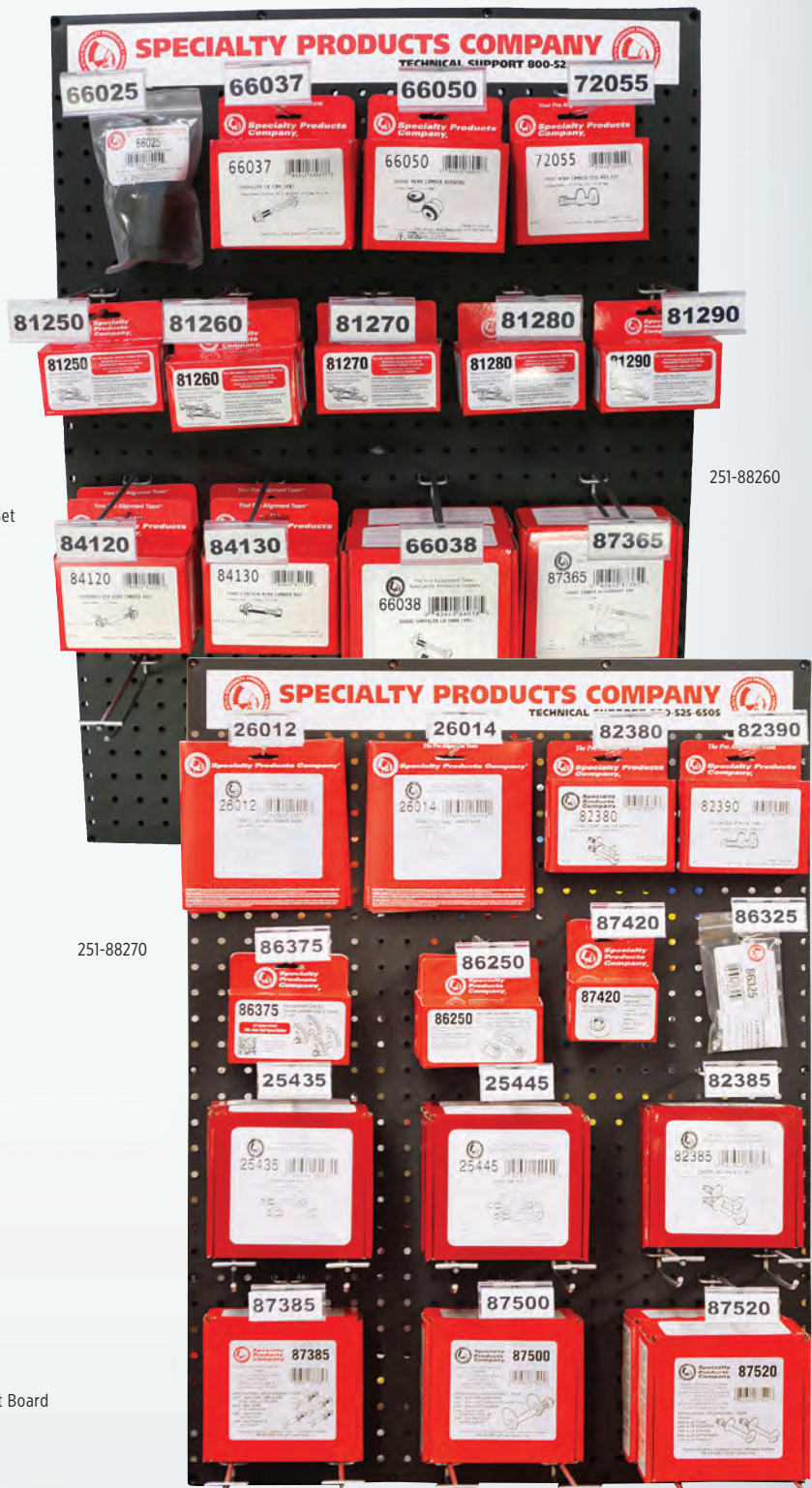
## LIGHT TRUCK/SUV SLEEVE ASSORTMENT BOARD SET

- This great new board set includes the most popular parts for aligning today's trucks and SUVs. Don't be caught without the part that you need • Shipped with the polymer display board

**CONTAINS ONE OF EACH OF THE FOLLOWING:**

66050, 66025, 66037, 72055, 81250, 81260, 81270, 81280, 81290, 84120, 87365

ASCOT NO.	MFG. NO.	DESCRIPTION
251-88270	88270	Light Truck/SUV Sleeve Assortment Board



251-88270

251-88260

# Camber/Caster Terms & Definitions

## ALIGNMENT TERMS for CAMBER

**DEFINITION** Inward or outward tilt of the top of the wheel

**PURPOSE** Adjustment centers the vehicle's load on tire, eliminating pull. Proper adjustments reduce camber tire wear and pulling

**METHODS OF ADJUSTMENT** (1) Shims; (2) Cams; (3) Slotted Frame; (4) Strut Rod; (5) Wedges; (6) Ball Joint Rotation; (7) Offset Bearing Plates; (8) Cam Bolts; (9) Eccentrics; (10) Offset Ball Joints

**0 CAMBER** When wheel and tire assembly are in exact vertical position

**POS. CAMBER** When the top of the wheel and tire assembly is tilted out, or away from the engine

**NEG. CAMBER** The top of the wheel and tire assembly is tilted in toward the engine

## ALIGNMENT TERMS for CASTER

**DEFINITION** The forward or backward tilt of the upper ball joint, or top of the strut, relative to the lower ball joint

**PURPOSE** Caster affects steering stability and steering wheel returnability

**METHODS OF ADJUSTMENT** (1) Shims; (2) Cams; (3) Slotted Frame; (4) Strut Rod; (5) Strut Rotation; (6) Cradle Movement; (7) Offset Ball Joint; (8) Sliding Ball Joint

**0 CASTER** The upper ball joint or top strut bearing and lower ball joint are in the same plane as viewed from the side of the vehicle

**POS. CASTER** The upper ball joint or top strut bearing is toward the rear of the vehicle in relation to the lower ball joint as viewed from the side of the vehicle

**NEG. CASTER** The upper ball joint or top strut bearing is toward the front of the vehicle in relation to the lower ball joint as viewed from the side of the vehicle





# Camber/Caster Tools

## FORD 4WD CAMBER/CASTER SLEEVE SET

• Change camber, caster or both at the same time. Remove the tire, cotter pin and upper ball joint stud nut and break the taper free between the stud and sleeve • To adjust camber/caster, the sleeve may be lifted and rotated 1/8 turn • Sized in 1/4° increments through 2° • One sleeve covers one side of the vehicle • ESTIMATED INSTALLATION TIME: .5 hr/side

ASCOT NO.	MFG. NO.	DESCRIPTION	APPLICATIONS
231-23100	23100	Complete Set	FORD 4WD: 1980 & Up F250, F350, E250, E350, Full Size Bronco w/Ball Joints, 1980-96 F150, F250 (L/D)

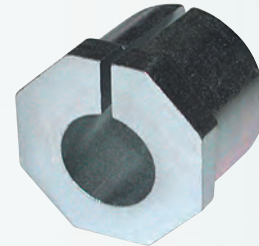


231-23100

## FORD & DODGE CAMBER/CASTER SLEEVE SET

• Sleeves change camber, caster or both at the same time • Remove the upper ball joint stud nut and break taper free between the stud and sleeve • Calculate the change and install correct sleeve • Sized in 1/4° increments • One sleeve covers one side of the vehicle • ESTIMATED INSTALLATION TIME: .5 hr/side

ASCOT NO.	MFG. NO.	DESCRIPTION	APPLICATIONS
231-23130	23130	Complete Set	DODGE: 1994-99 BR2500 4WD, BR3500 2WD/4WD Ford 4WD: 1992 & Up F350 Crew Cab Pickup, Some F250 4WD w/Straight Axle, 1999 & Up Super Duty 250, 350, 450, 550



231-23130

## 23220 & 23230 SLEEVE SETS

• Ford changed the axle design in 2005 on their Heavy Duty trucks. These sleeves correct camber and caster on the new 4x4 F250 and F350 Super Duty trucks

ASCOT NO.	MFG. NO.	DESCRIPTION	APPLICATIONS
231-23220	23220	Complete Set	FORD 4WD: 2005 & Up F250, F350 Super Duty; FORD RWD: 2005 & Up F250, F350 Solid Axle/Coil Spring
231-23230	23230	Complete Set	FORD RWD/4WD: 2005 & Up F450, F550 Coil Springs; CHEVY/GMC 4WD: 2005 & Up Kodiak K4500, Topkick K5500



231-23220



231-23230

## FORD 2 & 4WD CAMBER/CASTER TRUCK SLEEVES

• Sleeves are widely used to adjust caster and/or camber on many Ford 2WD/4WD trucks • To install, simply loosen and remove upper ball joint pinch bolt. Remove top snap ring if one is present • Sleeves allow for larger caster and camber changes which may be required on lowered and raised trucks • SET INCLUDES: Nine of the XRTM Camber/Caster truck sleeves

ASCOT NO.	MFG. NO.	DESCRIPTION	APPLICATIONS
231-23180	23180	Complete Set	FORD 2WD:1987 & Up F350, 1987-96 F150, F250 (L/D), 1989-90 Bronco II, 1992 & Up E150, E250, E350, 1991-94 Explorer, 1989 -97 Ranger, 1999 & Up F250, F350 Super Duty; MAZDA 2WD:1991-97 Navajo, Pickup; Ford 4WD:1991-94 Explorer, 1990 - 97 Ranger; MAZDA 4WD:1991-97 Navajo, Pickup



231-23180

## BALL JOINT PRESS SLEEVES

• These specially designed sleeves make installation of the #23510-40 ball joints easy and profitable for the installer • Sleeves are designed to match the angle of the yoke on the axle housing to insure proper ball joint

ASCOT NO.	MFG. NO.	DESCRIPTION
231-23580	23580	Bushing Sleeves For Ball Joints 23510, 23520, 23530, 23540



231-23580



### F150/250 (L/D) 2/4WD CAMBER/CASTER KIT

ASCOT NO.	MFG. NO.	DESCRIPTION	APPLICATIONS
231-87385	87385	F/150/250, 2/4WD Camber Caster Kit	FORD: 1997-03 F150, F250 (L/D), 1997-02 2WD & 4WD Expedition; LINCOLN: 1997-02 2WD & 4WD Navigator

### GM 2WD & 4WD CAMBER/CASTER KIT

ASCOT NO.	MFG. NO.	DESCRIPTION	APPLICATIONS
231-87400	87400	GM 2/4WD Camber Caster Kit	GM: 1988-99 1500, 2500, 3500 C & K series 2WD/4WD trucks, 1990 & up Safari AWD Van; CHEVROLET: 1990 & up Astro AWD Van

### GM 2WD & 4WD CAMBER/CASTER KIT

ASCOT NO.	MFG. NO.	DESCRIPTION	APPLICATIONS
231-87500	87500	Ford Explorer Camber/Caster Set	FORD: 1995-01 2WD & 4WD Explorer, 1998 & up 2WD & 4WD Ranger; MERCURY: 1995-01 2WD & 4WD Mountaineer; MAZDA: 1998 2WD & 4WD B-Series Pickup

### EXPLORER CAMBER/CASTER KIT

- Set of 4 cams for quick installation without having to remove the upper control arm bolt

ASCOT NO.	MFG. NO.	DESC.	APPLICATIONS
231-87310	87310	Explorer Camber/Caster Kit	FORD: 1995-01 2WD & 4WD Explorer, 1998-02 2WD & 4WD Ranger; MERCURY: 1995-01 & up 2WD & 4WD Mountaineer; MAZDA: 1998 2WD & 4WD B-Series Pickup

### DODGE TRUCK CAMBER/CASTER KITS

- KIT INCLUDES: 4 cam and bolt sets to cover both sides of the vehicle

ASCOT NO.	MFG. NO.	DESCRIPTION	APPLICATIONS
231-23755	23755	Dodge Camber/Caster Kit, 4 Wheel Drive	DODGE: 2002 & Up 1500 Series - 4 Wheel Drive
231-23765	23765	Dodge Camber/Caster Kit, 2 Wheel Drive	DODGE: 2002 & Up 1500 Series - 2 Wheel Drive

### EZ-CAM™ XR - CAMBER KITS FOR DOMESTIC/IMPORT TWO BOLT STRUTS (PAIR)

- Designed for non-slotted struts • EACH KIT CONTAINS: Two cam Bolt assemblies, enough for both sides of the vehicle

ASCOT NO.	MFG. NO.	DESCRIPTION	APPLICATIONS
223-81240	81240	Camber Kits for Domestic/Import Two Bolt Struts (Pair)	ALFA ROMEO, FIAT, LANCIA



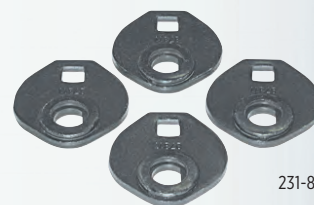
231-87385



231-87400



231-87500



231-87310



231-23755



223-81240



## Camber/Casters Tools (cont.)

### JEEP AND DODGE OFFSET BALL JOINT

- Offset ball joint replaces the O.E. upper ball joint to provide up to 2° camber/caster change on several previously non-adjustable Jeep and Dodge vehicles • Comes with an installation template for accurate change

ASCOT NO.	MFG. NO.	DESCRIPTION	APPLICATIONS
237-23510	23510	1/2" Positive Or Negative Change	JEEP: 1984 & up 2WD/4WD Cherokee, Comanche, 1987 & up Wrangler; 1990 & up Renegade, 1984 & up 2WD/4WD downsize Wagoneer; 1993 & up Grand Cherokee, DODGE: 1994 -2001 BR1500 4WD & BR2500 (L/D) Pickups
237-23520	23520	1" Positive Or Negative Change	
237-23530	23530	1-1/2" Positive Or Negative Change	
237-23540	23540	2" Positive Or Negative Change	



237-23520



231-86250

### FORD F150 KIT

- Easily adjust camber and caster on F150s from '04 and up (including late model) and '07 & up Expeditions

ASCOT NO.	MFG. NO.	DESCRIPTION	APPLICATIONS
231-86250	86250	Ford F150 Kit	FORD: 2004 & Up F150, 2007 & Up Expedition; LINCOLN: 2006 & Up Mark LT, 2007 & Up Navigator

### DODGE CASTER / PINION ANGLE CAM

- Whether the truck is lifted or stock ride height, optimize caster and pinion angles for better tracking and axle/drive shaft position

ASCOT NO.	MFG. NO.	DESCRIPTION
222-82395	82395	Dodge Caster / Pinion Angle Cam



222-87520

### NISSAN CAM BOLT KIT

- FRONT ADJUSTMENT RANGE: Camber/Caster  $\pm 2.00$  degree • 1 kit per wheel required

ASCOT NO.	MFG. NO.	DESCRIPTION
222-87520	87520	Nissan Cam Bolt Kit



Toyota Bolt Kit

### TOYOTA BOLT KIT

- FRONT ADJUSTMENT RANGE: Camber/Caster  $\pm 1.50$  degree • 1 kit per wheel required

ASCOT NO.	MFG. NO.	APPLICATIONS
222-25430	25430	TOYOTA 4WD: 1995-04 Tacoma; TOYOTA RWD: 1998-04 Tacoma PreRunner; TOYOTA 4WD&RWD: 1996-02 4-Runner
222-25435	25435	LEXUS AWD: 2003-09 GX; TOYOTA RWD: 2005 & up Tacoma PreRunner; TOYOTA 4WD: 2005 & Up Tacoma; TOYOTA 4WD&RWD: 2007-09 FJ Cruiser, 2003-09 4Runner
222-25440	25440	LEXUS AWD: 2010 & Up GX; TOYOTA 4WD&RWD: 2010 & Up FJ Cruiser, 2010 & Up 4Runner
222-25445	25445	TOYOTA: 01-07 Sequoia, 99-06 Tundra





## HONDA CIVIC ADJUSTABLE CONTROL ARM

- The arm is built with SPC's xAxis™ sealed flex joint to reduce compliance
- Its' unique adjustment design permits on car adjustment of  $\pm 3^\circ$  camber
- REAR ADJUSTMENT RANGE: Camber  $\pm 3.0^\circ$  • REQUIRED: 1 per wheel

ASCOT NO.	MFG. NO.	DESCRIPTION
222-67475	67475	Honda Civic Adjustable Control Arm



## HONDA/ACURA EZ ARM XR™

ASCOT NO.	MFG. NO.	ADJUSTMENT RANGE	APPLICATIONS
226-67030	67030	-2.00° To +3.40°	ACURA: Integra; HONDA: Civic, Del Sol, CRV, CRX
226-67230	67230	-4.00° To +6.00°	2001 and up Civic



## HYUNDAI/KIA REAR EZ ARM XR™

- Provide up to  $\pm 2^\circ$  camber and toe change • REAR ADJUSTMENT RANGE: Camber and Toe  $\pm 2.00^\circ$  • 1 per wheel required

ASCOT NO.	MFG. NO.	DESCRIPTION	APPLICATIONS
226-67410	67410	Hyundai/Kia Rear EZ Arm XR™	HYUNDAI: 2007 & Up Elantra; KIA: 2007 & Up Optima, 2007 & Up Rondo



## HONDA EZ ARM XR™

- Adjustment range: -2.00° to +4.00° • NOTE: An O.E. style ball joint is integrated in this arm

ASCOT NO.	MFG. NO.	DESCRIPTION	APPLICATIONS
226-67090	67090	Honda/Acura EZ Arm XR™	HONDA: 1998-2002 Accord; ACURA: 2001 3.2CL, 1999-2002 3.2TL 1996 & Up 3.5RL
226-67290	67290	Honda EZ Arm XR™	ACURA: 2001-06 MDX, 2004-08 TSX; HONDA: 2003-07 Accord, 1999-04 Odyssey, 2003-08 Pilot



## HONDA FRONT CAMBER/CASTER CONTROL ARM

- O.E. style control arm now makes it possible to adjust camber and caster on newer Honda Civics • Arm may be used on vehicles that have retained their stock ride height and vehicles that have been lowered for performance and appearance

ASCOT NO.	MFG. NO.	DESCRIPTION	APPLICATIONS
222-62010	62010	Honda Front Camber/Caster Control Arm	HONDA: 1996-2000 Civic

## ADJUSTABLE UPPER CONTROL ARM

- Camber adjustment from  $-1^\circ$  to  $+4^\circ$  • 1 control arm per wheel

ASCOT NO.	MFG. NO.	DESCRIPTION	APPLICATIONS
236-00100	CA100	Adjustable Upper Control Arm	HONDA: 1996-2000 Civic, 1997-2000 CRV

236-00100

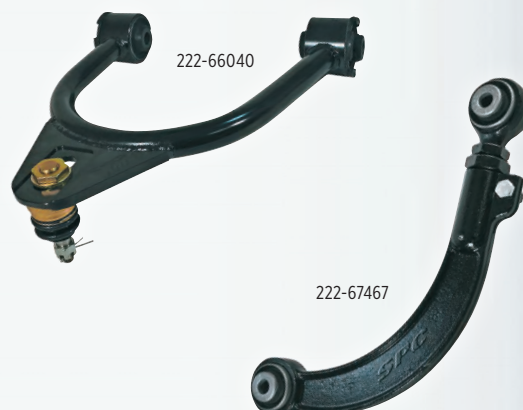


## Camber/Casters Tools (cont.)

### CHRYSLER/DODGE FRONT CONTROL ARM

- Arms fit both the right and left side • Camber adjustment  $\pm 2.0$  degrees
- Caster adjustment  $\pm 1.5$  degrees • 1 per wheel required

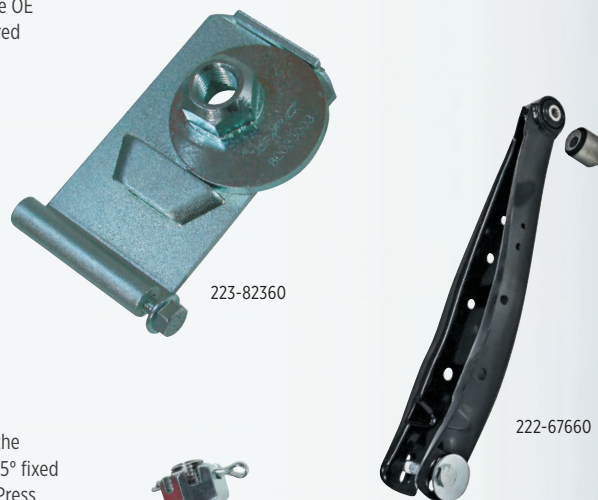
ASCOT NO.	MFG. NO.	APPLICATIONS
222-66040	66040	CHRYSLER: 2005-2008 300 RWD; DODGE: 2006 - 2008 Challenger, 2006 - 2008 Charger RWD, 2005 - 2008 Magnum RWD
222-66045	66045	CHRYSLER: 2009 & Up 300; DODGE: 2009 & Up Challenger, 2009 & Up Charger RWD
222-66047	66047	CHRYSLER: 2005 & Up 300 RWD; DODGE: 2006 & Up Charger AWD, 2005 - 2008 Magnum AWD



### HONDA CIVIC REAR ADJUSTABLE CONTROL ARM

- SPC's unique adjustment design permits on car adjustment of  $\pm 3.0^\circ$  camber and is adjustable for life • SPC's forged steel design adds adjustment to the arm without a weight penalty vs. the OE arm it will replace • REAR ADJUSTMENT RANGE: Camber  $\pm 3.0$  degrees • 1 per wheel required

ASCOT NO.	MFG. NO.	APPLICATIONS
222-67467	67467	2016 & Up Honda Civic (Incl. Si/Hybrid)



### LOWER CONTROL ARM CAMBER KIT

- Even with the suspension loaded, this kits makes changes of up to  $\pm 1.5$  degree camber/caster fast and easy

ASCOT NO.	MFG. NO.	DESCRIPTION
223-82360	82360	Lower Control Arm Camber Kit

### REAR ADJUSTABLE LOWER CONTROL ARM

- This hi-strength adjustable lower rear camber arm provides  $\pm 2.0$  degrees of change for the popular BRZ, FR-S, WRX and Impreza • REAR ADJUSTMENT RANGE: Camber  $\pm 2.0^\circ$ , Toe  $1.5^\circ$  fixed
- 1 per wheel required • RECOMMENDED TOOLS: 67647 Bushing Sleeves, 72509 Ball Joint Press

ASCOT NO.	MFG. NO.	DESCRIPTION
222-67660	67660	Rear Adjustable Lower Control Arm

### ADJUSTABLE BALL JOINT

- Adjustable upper ball joints make front camber/caster adjustments easy on late model Honda and Acura • ADJUSTMENT:  $-1.50^\circ$  to  $+1.50^\circ$

ASCOT NO.	MFG. NO.	DESCRIPTION	APPLICATIONS
226-67125	67125	Honda/Acura Adjustable Ball Joint	ACURA: 1996 - 97 2.2CL, 1998 - 99 2.3CL, 1996 - 99 3.0CL, 2001-04 3.2CL, 1999 - 2004 TSX; 1996-98 2.5 TL; 3.2 TL; HONDA: 1998 - 02 Accord, 1989 - 91 Civic & CRX, 1995 - 98 Odyssey
226-67165	67165	Honda/Acura Adjustable Ball Joint	ACURA: 1995 - 98 2.5TL, 1992 - 94 Vigor (front); HONDA: 1992 - 02 Prelude (Rear) 1992 - 1996 Prelude (Front)



### PERFORMANCE BALL JOINT PRESS SET

- Can remove the ball joint from the front upper control arm without removing the arm from the vehicle

ASCOT NO.	MFG. NO.	DESCRIPTION
227-40920	40920	Performance Ball Joint Set







## FULL CONTACT DUAL ANGLE EZ SHIMS™

- Full contact/dual angle • Corrects toe and camber with one shim • Total of three shims cover most shimable FWD vehicles

ASCOT NO.	MFG. NO.	DESCRIPTION	APPLICATIONS
221-75200	75200	Blue	Audi, Chevrolet/Geo, Chrysler, Dodge, Eagle, Isuzu, Plymouth, Volkswagen
221-75400	75400	Grey	Acura, Audi, Buick, Chevrolet, Chrysler, Dodge, Ford, Honda, Mercury, Nissan, Oldsmobile, Plymouth, Pontiac
221-75600	75600	Yellow	Buick, Cadillac, Chevrolet, Chrysler, Geo, Olds, Pontiac, Scion, Toyota, VW
221-75800	75800	Red	Buick, Cadillac, Chevrolet, Geo, Lexus SP, Oldsmobile, Pontiac, Toyota



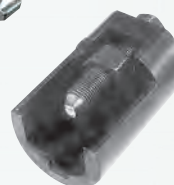
## FORD/DODGE TRUCK ADJUSTABLE CAMBER/CASTER BUSHING

- Camber and caster adjustment up to +/- 2-3/4° • 1 bushing per wheel

ASCOT NO.	MFG. NO.	DESCRIPTION	APPLICATIONS
231-00532	532	Ford/Dodge Truck Adjustable Camber/Caster Bushing	FORD: 1980-1985 4WD F150 and Bronco, 1980-2000 4WD F250 and F350; DODGE: 1994-1999 2WD/4WD 2500 Trucks, 1994-1999 4WD 3500 Trucks
231-00535	535	Ford Downsize Truck Adjustable Camber/Caster Bushing	FORD: 1983-1990 4WD Downsize Trucks
233-23120	23120	SET (9) 4WD CAM/CAS Sleeves. Set 23120 contains 23121 thru 23129	FORD 4WD: 1983 - 89 Bronco II; 1990 (Early) Bronco II; 1983 - 89 Ranger
233-23130	23130	SET (9) 4WD & RWD SLEEVES. Set contains one each of 23131 thru 23139	FORD 4WD: 1997 - 98 F250 (H/D), 1999 - 04 F250, F350, F450, F550, Super Duty 2000 - 05 Excursion, 1992 - 98 F350 Crew Cab; FORD RWD: 1999 - 04 F450, F550 Super Duty; DODGE 4WD: 1994 - 99 BR2500, BR3500; DODGE RWD: 1994 - 02 BR3500 w/Mono Beam



231-00532



247-77880



223-91000

## FORD COMBINATION SLEEVE PULLER

- Pulls both O.E. and most aftermarket camber/caster sleeves quickly and efficiently without damaging the ears of the sleeve • Heat treated high strength steel • Single-unit design with no loose parts

ASCOT NO.	MFG. NO.	DESCRIPTION	APPLICATIONS
247-77880	77880	Ford Combination Sleeve Puller	FORD: Twin I-Beam w/ Upper And Lower Ball Joints

## FASTRAX™ COMPLETE ADJUSTABLE CAMBER/CASTER GAUGE

- Portable, hands-free alignment can be done quickly and easily with the Fastrax™ Adjustable Camber/Caster Gauge stock or Specialty Product's sliding ball joints

ASCOT NO.	MFG. NO.	WHEEL SIZE
223-91000	91000	13" - 18"

## FASTRAX™ CAMBER/CASTER GAUGE

- Add quick alignment checks to your fleet PMs • Save tire wear & fuel costs

ASCOT NO.	MFG. NO.	WHEEL SIZE
223-91040	91040	21" - 26"



223-91040

# Heavy Duty Alignment

## TRUCK AXLE SHIMS (HEAVY DUTY ZINC ALLOY)

- Available in 1/2° changes up to a 4° caster change, either positive or negative • Packaged six per box • Any solid axle 2 or 4 wheel drive vehicle

ASCOT NO.	MFG. NO.	WIDTH	DEGREE TAPER
243-00891	89199	3"-3-1/2"-4"	1/2 °
243-00892	89299	3"-3-1/2"-4"	1 °
243-00893	89399	3"-3-1/2"-4"	1-1/2 °
243-00894	89499	3"-3-1/2"-4"	2 °
243-00895	89599	3"-3-1/2"-4"	2-1/2 °
243-00896	89699	3"-3-1/2"-4"	3 °
243-00897	89799	3"-3-1/2"-4"	3-1/2 °
243-00898	89899	3"-3-1/2"-4"	4 °



## TRUCK AXLE SHIMS (HEAVY DUTY ZINC ALLOY)

- One part number gives you six shims in a box

ASCOT NO.	MFG. NO.	WIDTH	DEGREE TAPER	BOX WT.
243-00841	84199	2-1/4"- 2-1/2"	1/2 °	1-1/2 Lbs.
243-00842	84299	2-1/4"- 2-1/2"	1 °	1-1/2 Lbs.
243-00843	84399	2-1/4"- 2-1/2"	1-1/2 °	2 Lbs.
243-00844	84499	2-1/4"- 2-1/2"	2 °	2-1/4 Lbs.
243-00845	84599	2-1/4"- 2-1/2"	2-1/2 °	2-3/4 Lbs.
243-00846	84699	2-1/4"- 2-1/2"	3 °	2-3/4 Lbs.
243-00847	84799	2-1/4"- 2-1/2"	3-1/2 °	3-1/4 Lbs.
243-00848	84899	2-1/4"- 2-1/2"	4 °	3-1/4 Lbs.



## PETERBILT AIR LEAF ADJUSTING SHIM

ASCOT NO.	MFG. NO.	SIZE	QTY.
246-35010	35010	1/32"	6
246-35011	35011	1/16"	6
246-35012	35012	1/8"	6

## FREIGHTLINER ADJUSTING SHIMS

ASCOT NO.	MFG. NO.	SIZE	QTY.
246-35020	35020	1/32"	6
246-35021	35021	1/16"	6
246-35022	35022	1/8"	6



## KENWORTH AIR GLIDE SPACER FOR EIGHT BAGGERS

ASCOT NO.	MFG. NO.	THICKNESS	QTY.
241-35001	35001	1/32"	6
241-35002	35002	1/16"	6
241-35003	35003	1/8"	6
241-35004	35004	1/4"	6
241-35005	35005	1/2"	6
241-35006	35006	3/4"	6
241-35007	35007	1"	6



241-35001  
1/32" Spacer



## SUSPENSION SYSTEMS



APPLICATION GUIDE

### VOLVO/WHITE TANDEM SHIMS

ASCOT NO.	MFG. NO.	SIZE	QTY.
246-35030	35030	1/32"	6
246-35031	35031	1/16"	6
246-35032	35032	1/8"	6

### I.H.C. TORQUE ARM SHIMS

ASCOT NO.	MFG. NO.	SIZE	QTY.
246-35040	35040	1/32"	6
246-35041	35041	1/16"	6
246-35042	35042	1/8"	6

### SINGLE SLOT TANDEM TRUCK SHIMS

ASCOT NO.	MFG. NO.	SIZE	QTY.
246-35060	35060	1/32"	6
246-35061	35061	1/16"	6
246-35062	35062	1/8"	6

### FREIGHTLINER SHIMS FOR AIR GLIDE SUSPENSION

ASCOT NO.	MFG. NO.	SIZE	QTY.
246-35070	35070	1/32"	6
246-35071	35071	1/16"	6
246-35072	35072	1/8"	6

### PETERBILT/KENWORTH FLEX AIR SUSPENSION SHIMS

- Adjust thrust angle and toe by shimming the torque arms

ASCOT NO.	MFG. NO.	SIZE	QTY.
246-36010	36010	1/32"	6
246-36011	36011	1/16"	6
246-36012	36012	1/8"	6

### S-CAM BUSHING EXTRACTOR

ASCOT NO.	MFG. NO.	DESCRIPTION
247-91860	91860	S-Cam Bushing Extractor

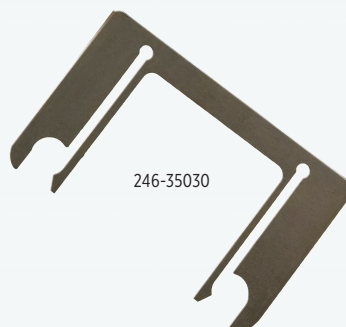
### TANDEM ALIGNMENT SET

- These alignment angle shims are now available in a heavy duty metal box to help you organize all of your shims • Packaged with a large variety of shims and an organization chart inside the lid to make reordering and organization of shims quick and easy

ASCOT NO.	MFG. NO.	DESCRIPTION
246-36000	36000	Tandem Alignment Set



246-35040



246-35030



246-35070



246-35060



247-91860



246-36010



246-36000



## Heavy Duty Alignment (cont.)

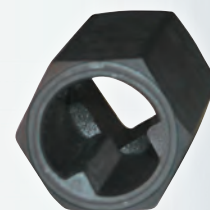
### GM UPPER CONTROL ARM PUNCH

- For removing the alignment inserts on the upper control arm alignment brackets without damaging the alignment bracket • Lubricate before use • Not for use with impact wrenches (air tools)

ASCOT NO.	MFG. NO.	DESCRIPTION	APPLICATIONS
247-74910	74910	GM Upper Control Arm Punch	CHEVROLET/GM: 1989 - 1998 2WD/4WD C & K Series 1/2, 3/4 & 1 Ton Trucks, 1991 & Up AWD Astro Vans & AWD Safari Vans



247-74910



236-45938

### CANYON/COLORADO SOCKET

- This special grooved socket fits over the end of the bolt allowing the technician to turn the alignment cams to change alignment angles after loosening the lock nut

ASCOT NO.	MFG. NO.	DESCRIPTION
236-45938	45938	Canyon/Colorado Socket

236-77350



### FORD SUPER DUTY TIE ROD SLEEVE ADJUSTER

- Extra long bar gives you maximum leverage to loosen rusted sleeves without injuring your knuckles • 8-position tool allows 360° rotation without removing the adjuster block from the sleeve

ASCOT NO.	MFG. NO.	DESCRIPTION
236-77350	77350	Ford Super Duty Tie Rod Sleeve Adjuster



228-61400

### AIR BLADDER CAMBER ADJUSTING TOOL

- Simply loosen the strut mount bolts, place the adjuster between the tire and strut, and inflate • To adjust camber slowly release the air until the wheel retracts to the specified alignment setting, tighten bolts and the alignment is done • INCLUDES: A specially designed, puncture resistant air bladder, 2' air hose, a low pressure pop-off valve to prevent overinflating and an air control valve for inflating and controlled deflating

ASCOT NO.	MFG. NO.	DESCRIPTION
228-61400	DOWTC614	Air Bladder Camber Adjusting Tool



247-08130

### H/D STEEL WHEEL RIM STRAIGHTENING TOOL

- For quick and easy removal of indentations on wheel flanges and rims of most vehicles

ASCOT NO.	MFG. NO.	DESCRIPTION
247-08130	81309	H/D Steel Wheel Rim Straightening Tool



227-89000

### INNER TIE ROD END WRENCH SET

- **CONTAINS:** 89105, 89106, 89107, 89108 • **CAUTION:** Not for use with impact wrenches (Air tools)

ASCOT NO.	MFG. NO.	DESCRIPTION
227-89000	89000	Inner Tie Rod End Wrench Set

# Automotive Alignment Equipment

## DWA1000XL WHEEL ALIGNMENT SYSTEM

The DWA1000XL wireless alignment system utilizes 8 Sensor CCD Technology and MEMS static accelerometers, providing the latest in measuring technology. CEMB's DWA 1000 total vehicle wheel alignment machine improves safety and driver comfort, reduces fuel consumption and tire wear. Comes fully assembled.



## DWA3500 3D HIGH DEFINITION WHEEL ALIGNMENT SYSTEM

DWA3500 is the new 3D wheel alignment system for cars and light commercial vehicles, with a completely redesigned cabinet with drawers and housings for printer and accessories, an easy accessibility for maintenance and an advanced software. The 3D camera support beam is motorized and fully automated. Camera beam height is automatically adjusted to the height of lift. The software system, entirely developed by CEMB, guides the user through all the alignment operations with clear and user-friendly graphics.



ASCOT NO.	MFG. NO.	DESCRIPTION
203-10003	DWA1000XL	DWA1000XL Wheel Alignment System

ASCOT NO.	MFG. NO.	DESCRIPTION
203-35000	DWA3500	DWA3500 Wheel Alignment System with Automatic Camera Beam

## Automotive Alignment Equipment (cont.)

**Branick**

## BRANICK STRUT SPRING COMPRESSOR

- Known as "the standard in the industry," the 7600 handles the heaviest coil-over-shocks, on light trucks and SUV's, without needing additional adapters
- It also has longer handles for extra torque • The multi-positions upper spring hooks can be arranged for ultimate flexibility to fit "factory" coil spring configurations • It has a longer compression stroke that can even handle the Jeep KX Cherokee Trailhawk and an integrated structural ring guard • Whether long, short, narrow, or angled, the 7600 will get it done • MADE IN THE U.S.A.



ASCOT NO.	MFG. NO.	DESCRIPTION
228-07600	7600	Strut Spring Compressor
228-00761	761	Bench Mount for Strut Spring Compressor
228-00764	764	Mobile Cart for Strut Spring Compressor



## RADIAL RUNOUT GAUGE

Radial runout is an out of round condition in which the radius of the wheel or tire is not consistent from the wheel center to any point on the rim or the tread. Tire and wheel radial runout are often factors in troubleshooting ride and handling and in maintaining correct wheel balancing to reduce vibration.

- Measures vehicle vibration sensitivity • Measures out of round condition
- EASY TO USE: only 2 adjustments • Pinpoints high or low spots in the tire • Determines accurate centering of tire and wheel mounting



ASCOT NO.	MFG. NO.	DESCRIPTION
247-33173	64250	Radial Runout Gauge